

ASC Acoustic Panel

**SCREW
INSTALLATION**

ASC Supplies:

- Optional ASC Panel Install Kit
- Trim Head Screws



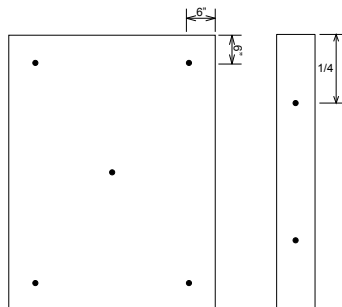
ASC uses special 2.25" trim head square drive screws that work well with Guilford fabric. The small head can penetrate the fabric surface fairly easily without damaging the threads. The screw can support an unglued panel, or hold it in position while glue sets. Screws are relatively safe if someone leans into the panel, unlike impaling clips.

Customer Supplies:

- Screwdriver, #1 Sqd
- Awl or sharp pointed tool
- Small scrub brush

Fastening

Screw mounting is a simple 1, 2, 3 process, using ASC's proven method. Screws are placed at each corner, 6" from edges. Add additional screws, such as one in the center, as required. For SoundPlanks, divide the total length into quarters, then one screw 1/4 from the top, and another screw 3/4 from the top.



1. Use awl or similar tool to find a gap in the fabric threads where the screw will go (Step 1a). Push awl all the way through the panel (Step 1b), give the awl a side-to-side wobble, spreading the threads. Remove the awl and push your 2 1/4" screw through the opening.

2. Use a #1 square head screwdriver to screw the screw-head past fabric surface (Step 2a). There will be a confirming "pop" when the screw-head goes in (Step 2b), and that is when you should stop. If necessary, apply 3 additional turns to make sure screw is firmly attached to wall. Don't be too concerned about the fabric surface deflection, that's OK.

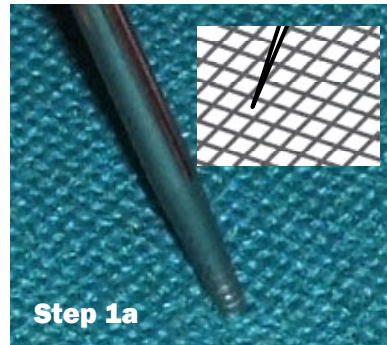
3. Remove screwdriver, and use a fingernail brush to close up the fabric threads (Steps 3a, 3b).

The ASC Panel Install Kit

For a nominal charge, ASC supplies a toolkit for the install procedure. The kit includes a high quality #1 square-head driver, an awl and a stiff bristle brush.

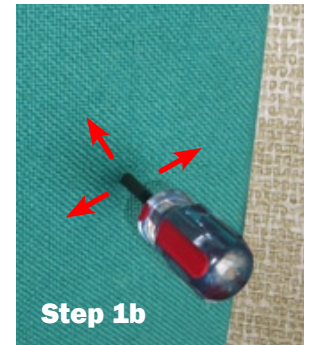
Still Not Sure?

You've ordered the best sound conditioning products available, we think you should hire the best for the installation too. Acoustical contractors are used to installing soundpanels. Look up "Acoustical Contractors" in the Yellow Pages and give them a call. Be sure to confirm that they have installed soundpanels.



Step 1a

Find Thread Gap



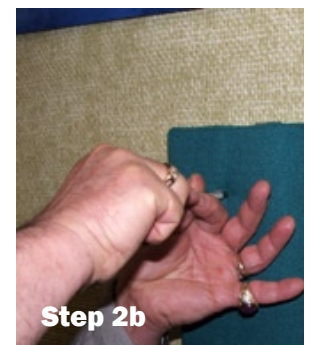
Step 1b

Awl Inserted Into Panel



Step 2a

Screwing Past Fabric Surface



Step 2b

Till You Hear a "Pop"



Step 3a

Brush Threads Closed



Step 3b

Panel After Mounting

ASC Panel Install Kit



High Quality Awl

Brush for Smoothing
Fabric Threads

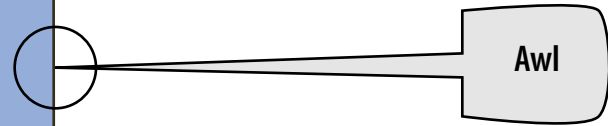
#1 Square-head Driver

Description

Visual Install Sequence

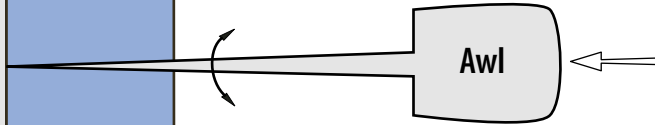
Use awl to find gap in threads where screw will go into panel.

Find Gap



Use awl to make pilot hole all the way through panel. Wobble awl to spread threads.

Awl Through



Slide screw through hole into panel, making sure threads don't get caught on screw.

Insert Slide



Step One

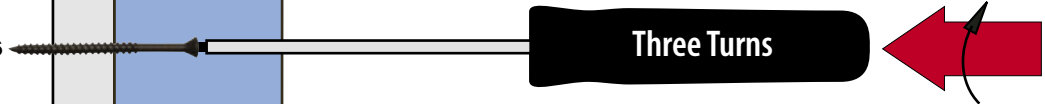
Drive screw to pop screw head past fabric surface.

Pop Through



Now apply three full 360° turns to the screw.

Three Turns



Step Two

Use small brush to return threads back to their original condition.

Brush



That's all there is to it!

Done



Step Three