



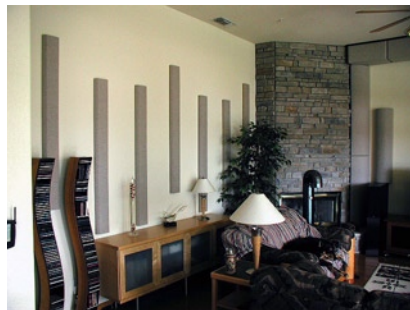
- ◆ Strong and durable with excellent acoustics
- ◆ Easily mounts on ceilings or walls
- ◆ Maintains ambience and treble diffusion
- ◆ Durable surface for easy care
- ◆ Quick and simple installation
- ◆ Low cost acoustic treatment without the clutter
- ◆ Won't clash with existing decor

## Our Most Versatile Acoustic Product

The SoundPlank is perfect for absorbing excess bass while keeping the acoustics bright and alive. Reverberation and echo signals are controlled while a fine-grained, diffusive reflection pattern fills the room. The resulting acoustic signature is smooth and uniform throughout. **SoundPlanks are typically used in auditoriums, band rooms, churches, day care facilities, gymnasiums, home theaters, restaurants, studios and high end listening rooms.** Many variations are possible, limited only by the need for a flat surface for mounting. They can be wall or ceiling mounted, panelized for easy installation, or used as part of ASC's **Coffered Ceiling** product. They can also be ordered in varying lengths to form visually appealing patterns.



## Incredible Finish Quality



The standard SoundPlank measures 6" or 8" by 60" in length by 2" thick. There is much more than a simple fabric covered fiberglass block here, our SoundPlanks are fully encapsulated by an acoustically transparent membrane to prevent glass fibers from entering your room. Each Plank also comes with our patented diffuser strip built-in and special end hardening to improve durability. Finally, we cover each Plank with acoustically transparent Guilford fabric. ASC's own

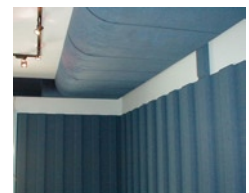
fabrication technicians will hand build and meticulously assemble each Plank to a quality standard only available from ASC. SoundPlanks are available covered with 7 standard Guilford of Maine 701 fabrics, or choose from many special order colors to match your specific needs. Custom sizes and thicknesses are also available.

## Panelized SoundPlanks

For home theaters and recording studios, we offer a panelized version of the SoundPlank. Each panel is 4' wide by 5' long with SoundPlanks mounted on a fabric covered backer board. The panels



are interlocking, making large installations quick and easy. When installed on a wall, the Planks line up perfectly, forming what looks a bit like a curtain. The end result is much more sonic detail in both music and, in the case of home theater, crystal clear spoken dialog.



**ASC** ACOUSTIC SCIENCES CORPORATION

### Headquarters:

4275 West 5th Ave.  
Eugene, OR 97402

### Contact:

Ph: 541.343.9727  
Fax: 541.343.9245  
info@tubetrap.com

www.acousticsscience.com

**1 800 272 8823**

